

WHAANAU ORA - A TREATY PARTNERSHIP APPROACH



CONTENTS

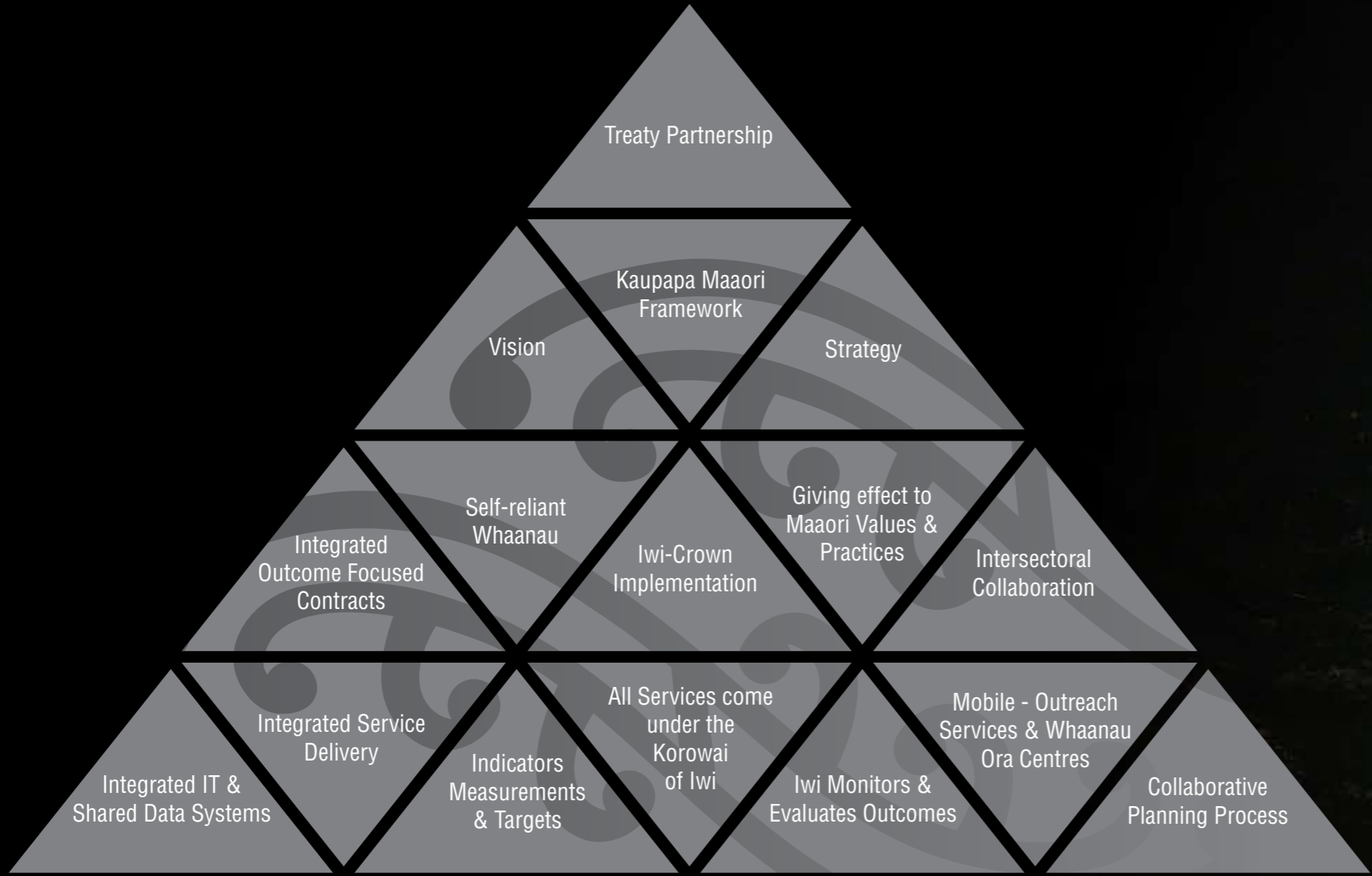
1. Strategy
2. Whaanau Centred Care Model
3. Governance
4. Kaupapa Maaori Framework
5. Service Delivery
6. Whaanau Ora Centre
7. Summary



SOCIAL TRANSFORMATION STRATEGY

An Iwi led approach to Whaanau Ora which operationalises our Treaty partnership with the Crown and is underpinned by a Kaupapa Maaori framework

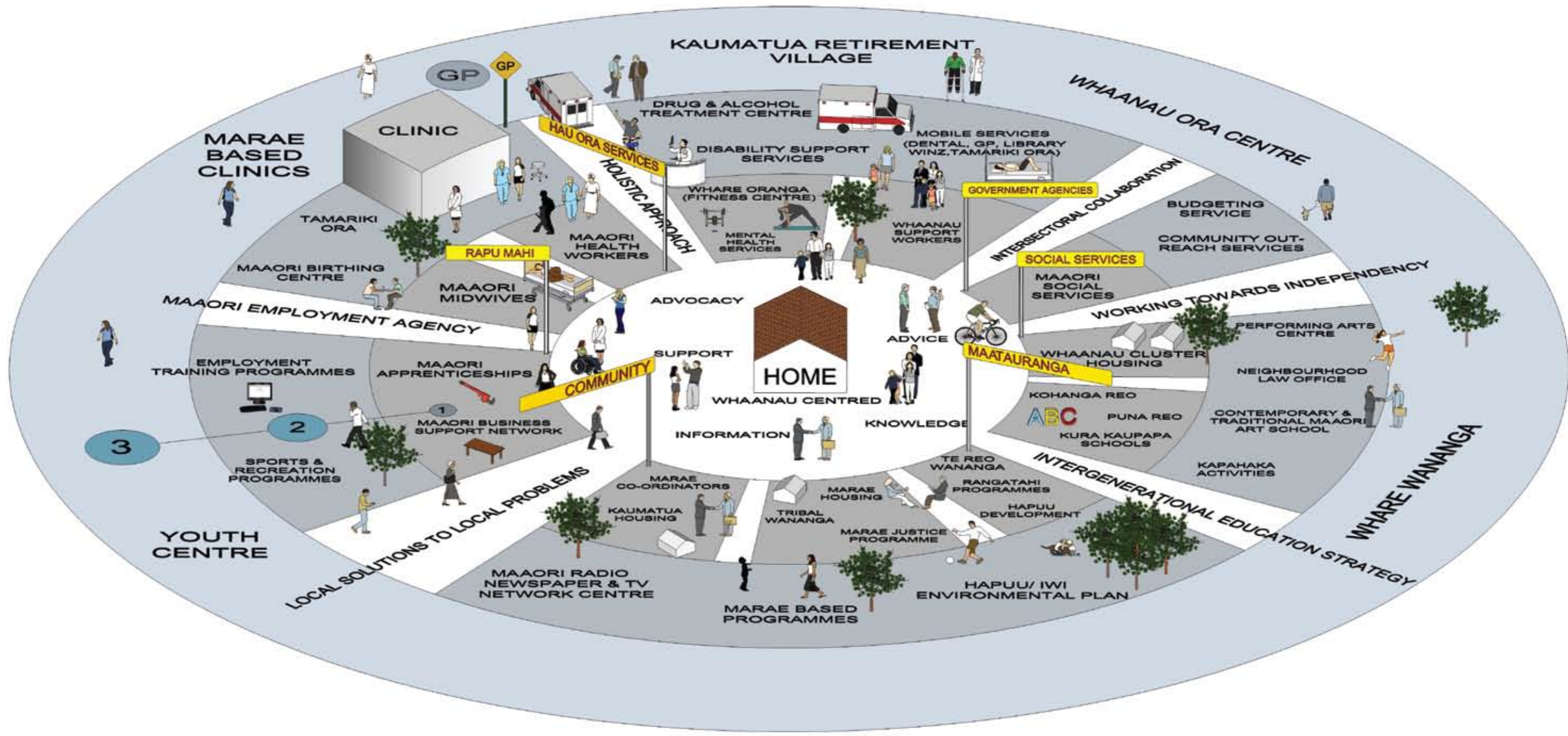




WHAANAU CENTRED CARE

Whaanau live in caring communities
that support and contribute to
their health and well-being





GOVERNANCE

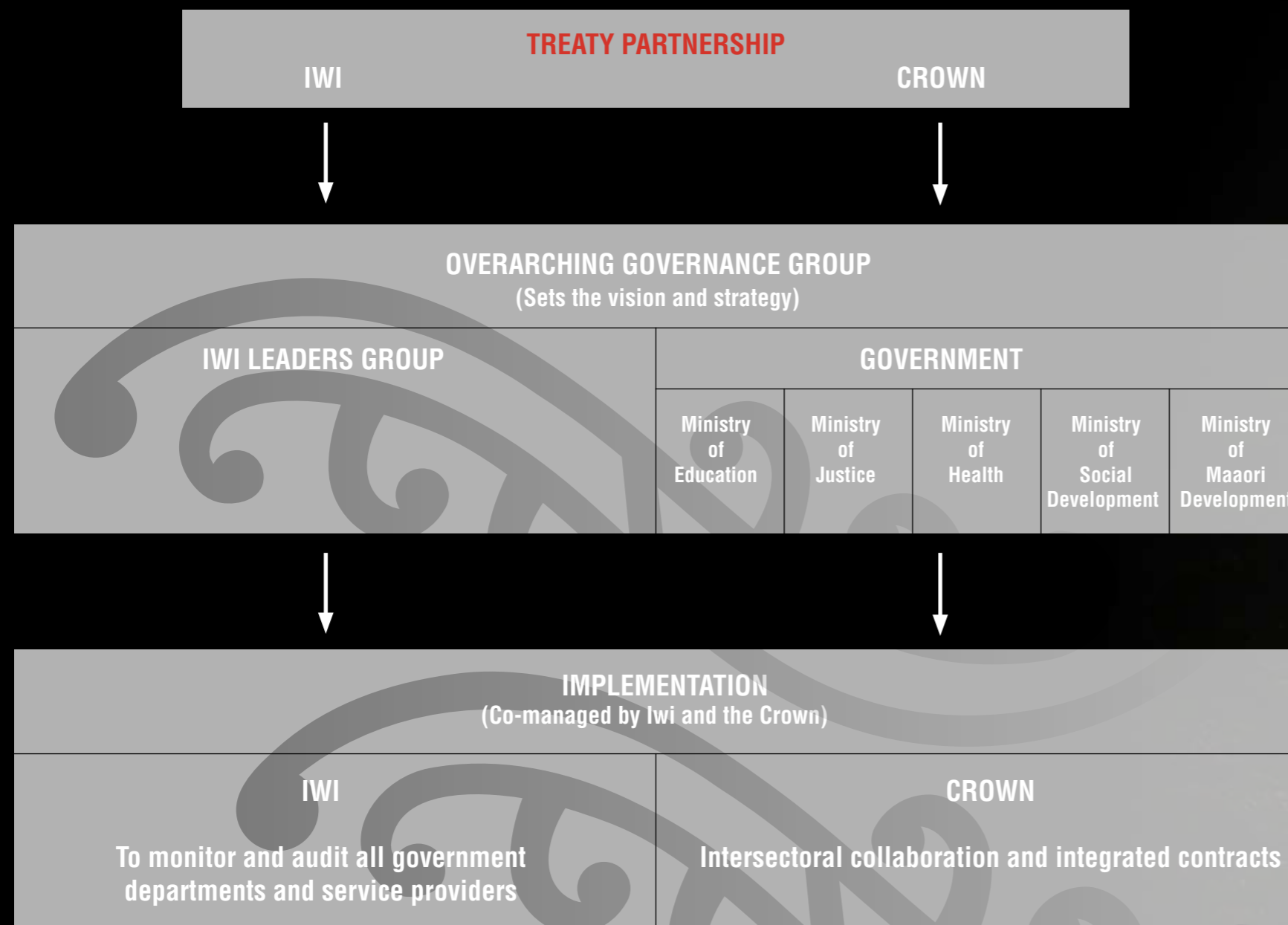
The Treaty of Waitangi is a unique covenant that exists between Iwi and the Crown. Article 1 confirms the Crown's Kawanatanga – right to Govern. Article 2 of the Treaty of Waitangi affirms the assertion of Iwi Tino Rangatiratanga. The Treaty of Waitangi was a very pragmatic solution to the challenges that this country faced 170 years ago. The acceptance and trust extended by Rangatira Maaori to the first Colonial leaders in 1840 is the same acceptance and trust that we require the Crown to demonstrate as we work together to find innovative ways to resolve the serious social problems facing our country today.

The most strategic role for Iwi in the development of Whaanau Ora is as a treaty partner in the Overarching Governance Group. The group will have equal numbers of Iwi leaders and Ministers of the Crown.

The underpinning principle of the Governance group is 'Rangatira ki te Rangatira' at the highest level.

Integral to the implementation of this Co-Governance responsibility is the need to monitor and assess all Government agencies and service providers to ensure Whaanau ora outcomes are achieved.





KAUPAPA MAAORI FRAMEWORK

- We believe a strong cultural foundation is critical for achieving Whaanau Ora.
- This foundation draws upon a set of values, philosophy, principles and practices that are Iwi-derived and grounded firmly in Maatauranga Maaori.
- The following elements are integral to the design, implementation and delivery of Whaanau ora:
 - Wairuatanga (spirituality)
 - Taha Tinana (physical well being)
 - Hinengaro (the mind)
 - Whaanaungatanga (the extended family)
 - Mana ake (the uniqueness of each individual and whaanau)
 - Mauri (Life force)
 - Haa a Koro maa a Kui maa (the breath of life from our forebears)
 - Whatumanawa (the open and healthy expression of emotion)
 - Whakapapa (descent from an eponymous ancestor)
- Each of these elements represents a dimension of selfhood and all must be present to attain Whaanau Ora. Lack of access or development of a dimension will result in less than optimum health and well-being.
- The cultural integrity of Whaanau Ora is paramount and requires:
 - Tikanga competent service design and delivery
 - Service design and delivery derived from traditional and contemporary Iwi models of holistic health and well-being
 - Tikanga Maaori practices in all operational aspects
 - A culturally competent workforce
 - Policy solutions informed by tikanga Maaori values, philosophies and practice
 - Maatauranga Maaori led and inspired research



TE WHEKE

TE WHAANAU -
The body and the head represent the Whaanau within the context of Hapuu and Iwi.

WAIORA -
The eyes of the Wheke reflect the total health and wellbeing of the Whaanau.

HINENGARO -
The true potential of Whaanau, Hapuu and Iwi is unleashed when the power of the mind is maximized.

WAIKUATANGA -
Wairuatanga represents our spiritual values and beliefs.

WHATUMANAWA -
The healthy expression of emotions.

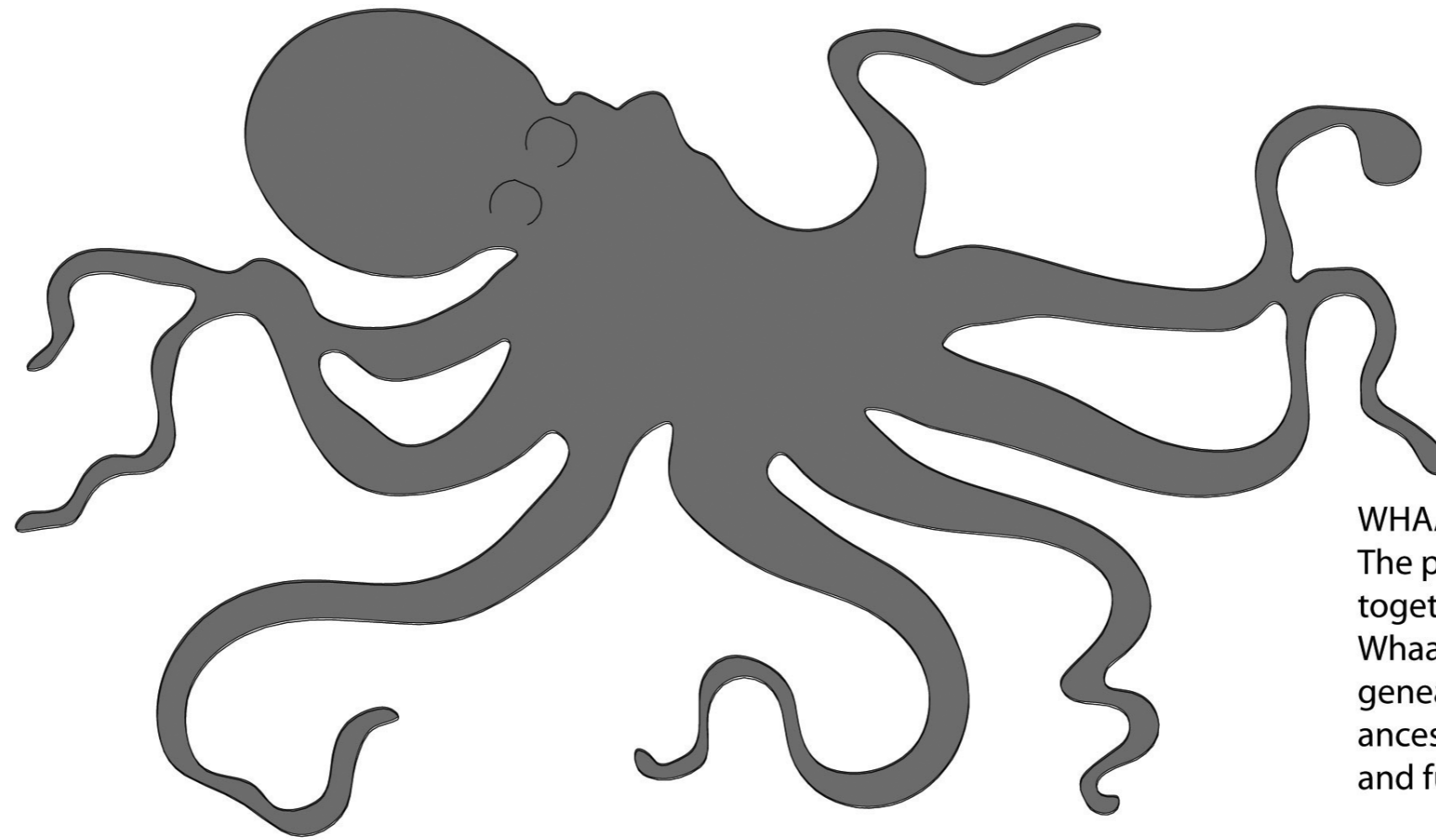
MANA AKE -
The cultural uniqueness of individuals, Whaanau, Hapuu and Iwi.

WHAANAUNGATANGA -
The principle of Whaanau working together to support each other. Whaanaungatanga is also the genealogical link that binds our ancestors to the present and future generations.

MAURI -
Mauri is the recognition of the life force of individuals, Whaanau, Hapuu and Iwi.

HA a KORO ma a KUI ma -
The Ha or breath of life is encapsulated in the cultural knowledge passed down to us by our ancestors.

TAHA TINANA -
Taha Tinana represent the physical wellbeing of individuals.



SERVICES DELIVERY MODEL

- Our service delivery model adopts a three-pronged approach that:
 - Will empower whaanau
 - Provide for integrated and holistic services
 - Will be immediate and responsive
- It is a model that on the one hand balances immediate and responsive support to 'at risk' whaanau alongside a range of initiatives that empower whaanau to attain Whaanau Ora.

EMPOWERING WHAANAU TO ACT

- A strengths-based approach is central to this model. We are committed to rebuilding strong, proud, independent and prosperous whaanau.
- To achieve this requires regional and local community initiatives that build whaanau capacity.

AN INTEGRATED AND HOLISTIC APPROACH

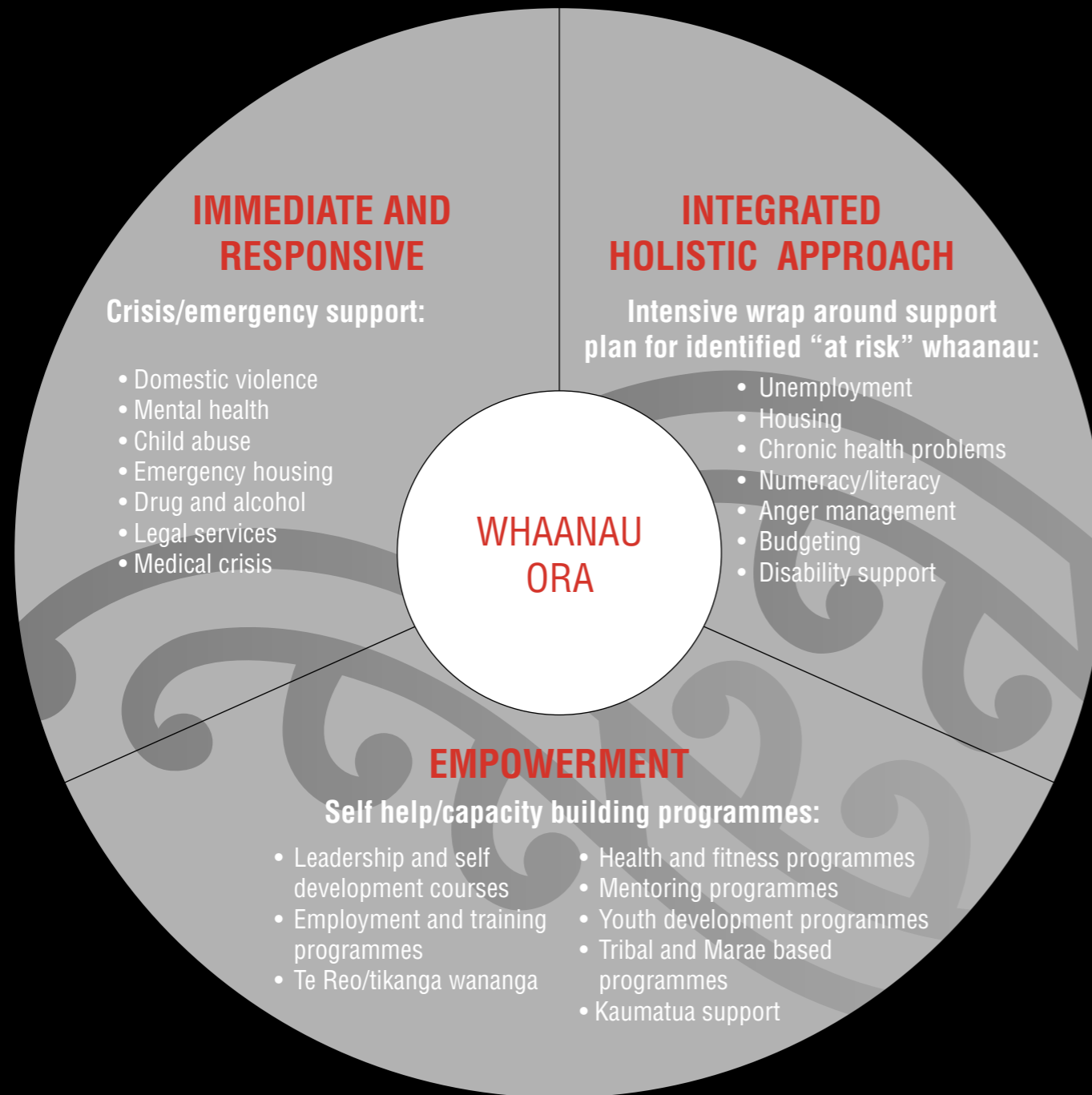
- The key to Whaanau Ora lies in an integrated and holistic approach – one that directly addresses the range of socio-economic determinants that contribute to poor outcomes.

TAKING IMMEDIATE AND RESPONSIVE ACTION

- Action to address poor outcomes requires attention and early intervention. This model seeks to de-escalate a situation and enable ongoing support to be provided.
- An intensive wrap around service will be available for “at risk” whaanau who have multiple, complex and intergenerational difficulties.



SERVICE DELIVERY MODEL



WHAANAU ORA CENTRE

- Whaanau Ora Centres will be owned and managed by Iwi. They will provide a central location for the delivery of a range of Whaanau Ora related services and initiatives and be supported by a network of organizations that also provide mobile and outreach services directly to whaanau in their communities.
- A wide range of service providers, government and non government, from church and youth groups to Work and Income, health and medical services will utilize these facilities – as a venue to run activities and programmes, for information, advice and training seminars and the delivery of support services.
- The main objective of this ‘one-stop’ approach is to provide:
 - accessible, convenient, user friendly services
 - a holistic, cohesive and supportive environment
 - Integrated sector services

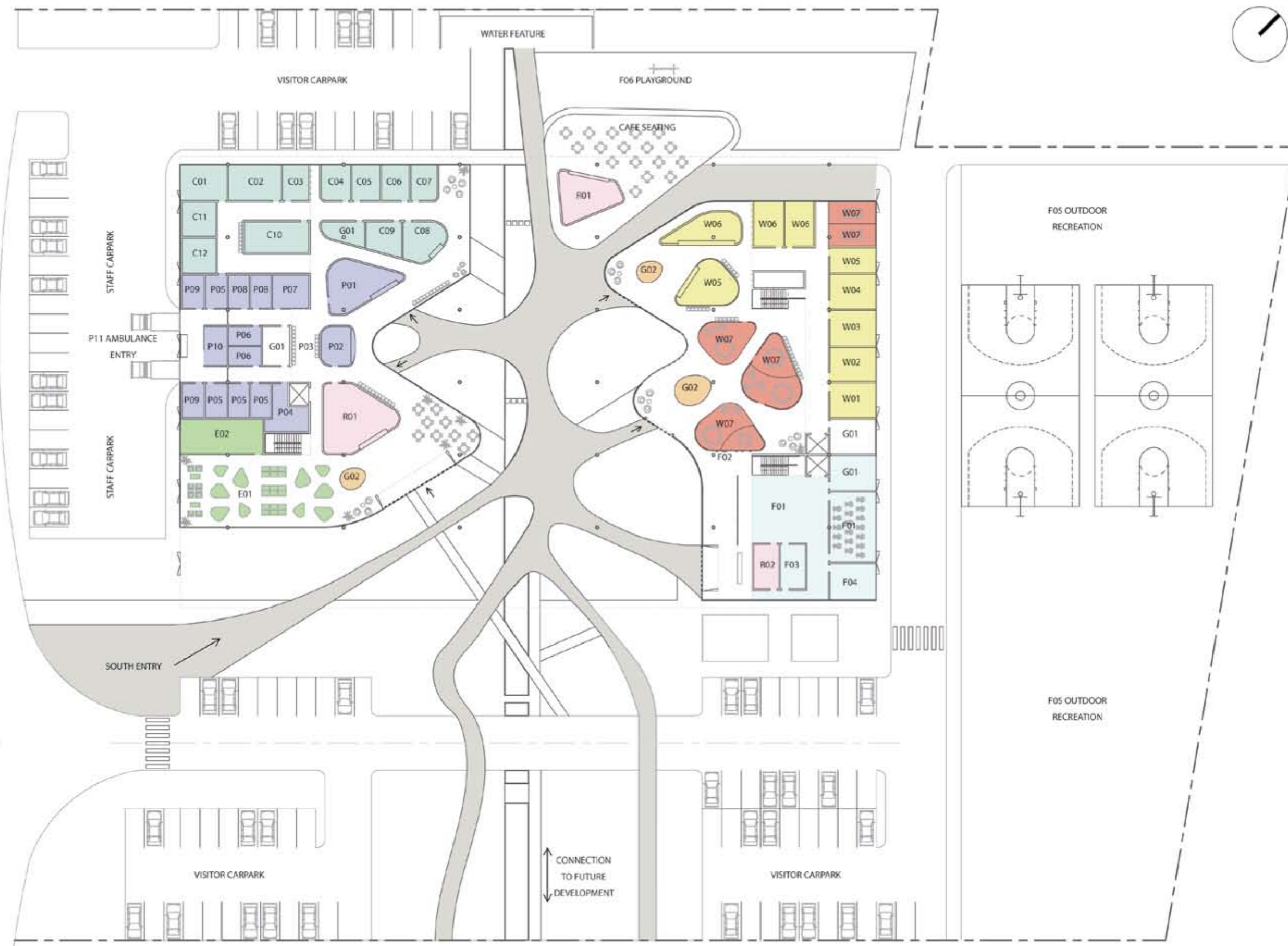












- COMPLEMENTARY HEALTH
 - C01 RONGOA
 - C02 DENTAL
 - C03 OPTOMETRY
 - C04 AUDIOLOGY
 - C05 OT
 - C06 PODIATRY ORTHOTICS
 - C07 PHYSIO
 - C08 RECEPTION/ADMIN
 - C09 CHIROPRACTOR
 - C10 X-RAY
 - C11 LAB
 - C12 BREAST SCREENING

- MEDICAL PRIMARY
 - P01 PHARMACY
 - P02 RECEPTION
 - P03 WAITING
 - P04 MEDICAL SPECIALIST
 - P05 GP
 - P06 NURSING PRACTITIONER
 - P07 SPORTS CLINIC
 - P08 FAMILY HEALTH
 - P08 A & E
 - P09 RESUS
 - P10 AMBULANCE ENTRY

- EDUCATION
 - E01 LEARNING CENTRE
 - E02 TRAINING

- FITNESS
 - F01 GYM
 - F02 CLIMBING WALL
 - F03 ADMINISTRATION
 - F04 PHYSIO
 - F05 OUTDOOR RECREATION
 - F06 PLAYGROUND

- SOCIAL SERVICES
 - W01 EMPLOYMENT
 - W02 HOUSING TENANCY
 - W03 COMMUNITY LAW
 - W04 BUDGETING
 - W05 CYFS
 - W06 WINZ
 - W07 FLEXI MEETING ROOMS

- RETAIL
 - R01 CAFE
 - R02 SPORTS MEDICINE/ NUTRITION

- GENERAL
 - G01 WC
 - G02 INFO STATION
 - G03 STAFF FACILITIES

SUMMARY

OUR VISION

- Is to work in partnership with the Crown to rebuild strong, prosperous and healthy whaanau.

OUR MISSION

- Is to support and strengthen whaanau in our tribal areas drawing upon traditional and contemporary Iwi based models.

OUR STRATEGIC APPROACH

- Is to work in partnership with the Crown to design and implement Whaanau Ora in an innovative and transformative way.

KEY PRINCIPLES

- The Treaty of Waitangi is this country's founding document and remains an important instrument to guide national development.
- Under Articles 1 and 2 of the Treaty of Waitangi, the Crown's role is to govern and ours is to exercise authority and control over all those things that we consider taonga, including our uri (descendants) and whaanau.
- Article 3 guarantees citizenship rights to Maaori and we assert requires Government to be pro-active in reducing social and economic disparities between Maaori and non-Maaori.
- Achieving Whaanau Ora requires active and responsive Crown and Iwi leadership.
- Achieving Whaanau Ora requires solutions that are whaanau and Iwi-centred.



OUR PROPOSAL

- A joint Crown-Iwi Treaty led approach to Whaanau Ora based on goodwill and interdependence in an enduring relationship.
- The establishment of an overarching Whaanau Ora Governance group made up of the Prime Minister and key Cabinet Ministers and an equal number of Iwi Leaders.
- The establishment of a Crown-Iwi working party comprising the Chief Executives from the key agencies and an equal number of Iwi appointed representatives. Some of the immediate tasks to be completed by 30 April will be to:
 - Develop a shared understanding of Whaanau Ora and how it will work at a national, regional and local level.
 - Develop an agreed set of key employment, education, health and welfare outcomes for the first 3 years.
 - Develop an approach that ensures government departments, agencies and community service providers operate in an integrated way with Iwi.
 - Establish mechanisms to support the effective rollout and delivery of Whaanau Ora by Iwi.
- Iwi-led implementation of Whaanau Ora in their respective tribal areas.
- Whaanau Ora piloted in six tribal areas and allocated an annual budget of \$20m per tribe to implement.

